

# ONE LESS BELL TO ANSWER

Lyric by HAL DAVID  
Music by BURT BACHARACH

Slowly

Fmaj7

One less

*mp*

*mp*

F6

Fmaj7

Dm(add E)

Dm7

bell to an - swer. . One less egg to fry.

F#maj7

A7 (sus)

A7

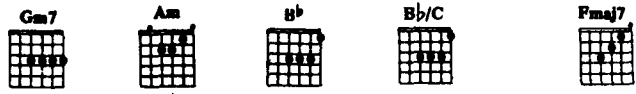
Dm7

G7

One less man to pick up af - ter. I should be hap - py, ———

3

3



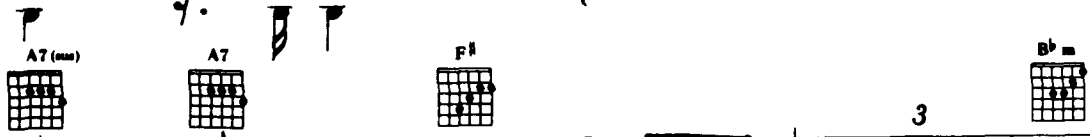
but all I do is cry. (Group:) Cry, cry,



no more laugh I should be hap - py — Oh, why



did he go? Oh I on - ly know that since he left my



life's so emp-ty. Though I try to for-get, it just can't be done. Each time the

door-bell rings — I still run. I don't know how — in the world — to stop

think - ing of him 'cause I still love him so. — I end each

day the — way I start out, cry - in' my heart out. One less

bell to an - swer. One less egg to fry.



One less man to pick up af - ter. No more laugh - ter,



no more love since he



went a - way. (Group:) Ah



Ah Ah Ah ah ah ah.

*Keep repeating and fade*